

Education System Governance

Comments in Support of a Data-Driven Decision Process

Presented by Dr. Marshall Berman

in collaboration with

Jack Jekowski

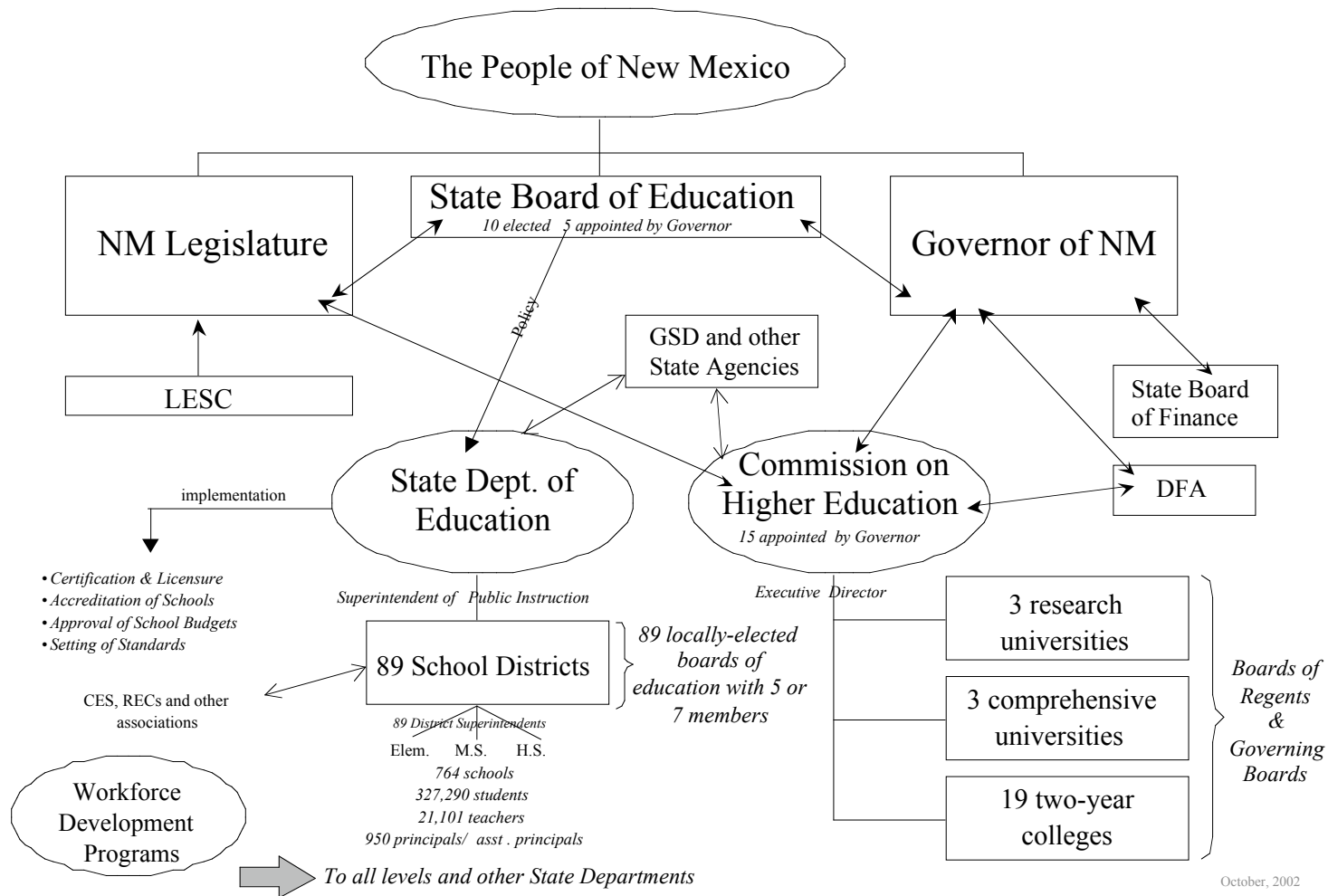
Albuquerque Business Education Compact

December 17, 2002

Why Did NM Change Governance in the Past?

The Education System

NEW MEXICO'S PUBLIC AND HIGHER EDUCATION SYSTEM



Governance Today in the U.S.

- Google search on “School Governance”: 894,000 hits
- Summary of state governance models: <http://www.nasbe.org/govmatrix.html>

STATE EDUCATION GOVERNANCE AT A GLANCE

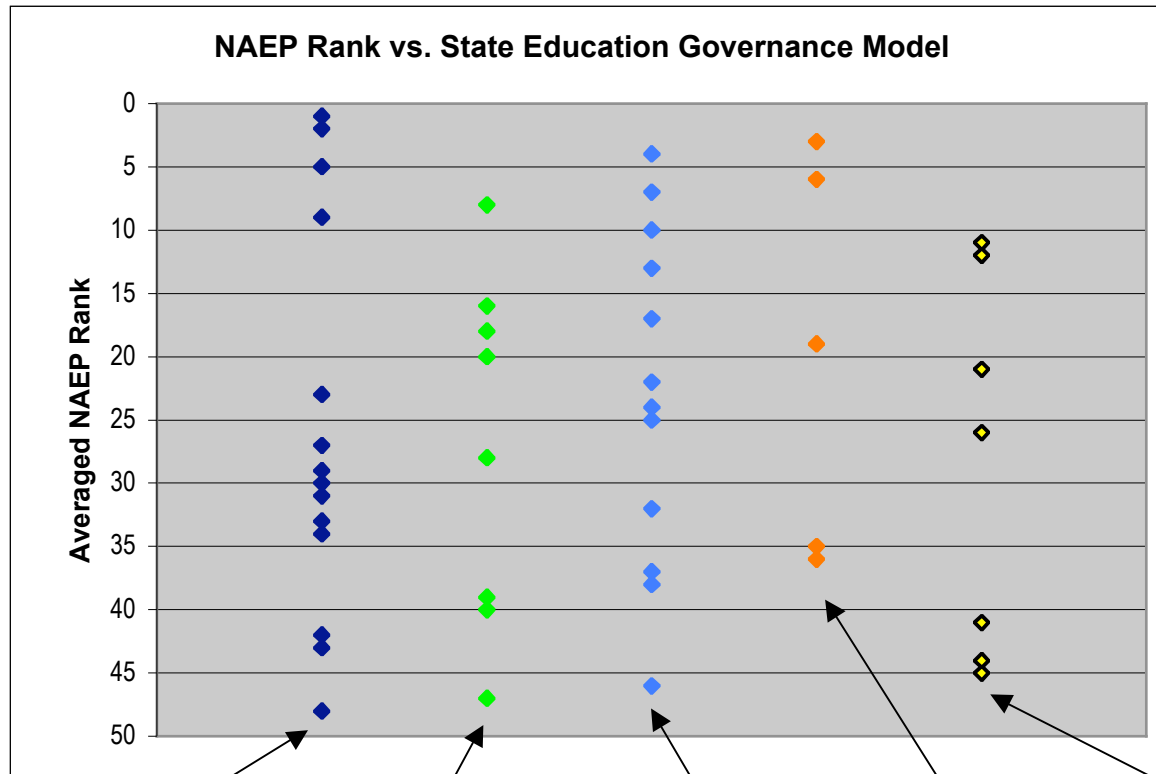
Compiled by the National Association of State Boards of Education

(Revised January 2001)

STATE	METHOD OF SELECTION OF STATE BOARD MEMBERS	NUMBER OF VOTING STATE BOARD MEMBERS	LENGTH OF TERM	METHOD OF SELECTION OF CHIEF STATE SCHOOL OFFICER	OFFICIAL ROLE OF CHIEF STATE SCHOOL OFFICER (CSSO) ON STATE BOARD	UNIQUE FEATURE OF STATE BOARD	SPECIAL NOTES
Alabama	Partisan Ballot	8 elected & Governor	4	Appt. by SBE	Sec. & Exec. Off.	Governor sits as President of Board	Four members elected in 1998 received 2-year terms so that 4 members will run for election every other year.
Alaska	Appt. by Gov.	7	5	Appt. by SBE, with approval by Gov.	Exec. Officer	Board appoints one non-voting student advisor and one non-voting military advisor	CSSO must have 5 yrs. experience in education; 3 in administration
Arizona	Appt. by Gov. Confirmed by Senate	9	4	Partisan Ballot	Exec. Officer	Sits as Vo-Tech board	Requires three lay members.
Arkansas	Appt. by Gov.	10	6	Appt. by SBE	Agent Ex Officio	The CSSO serves at the pleasure of the Gov.	CSSO must have 10 yrs. experience as a teacher; 5 in administration or supervisin. and hold Ark. teacher's certificate
California	Appt. by Gov.	11 incl. student member	4 (1yr. for student)	Non-Partisan Ballot	Sec. & Exec. Off.	Voting Student Member who has full participation rights	
Colorado	Partisan Ballot	7	6	Appt. by SBE	Secretary		
Connecticut	Appt. by Gov., approved by House and Senate	9	4	Appt. by SBE	Secretary	The Commissioner of Higher Education serves as an ex officio, non-voting member of the board	Beginning in 1998, two student member (non-voting) serve 1-year terms on the board
Delaware	Appt. by Gov., approved by	7	6	Appt. by Gov.	Exec. Secretary	2 SBE members must have local board experience	Change from State Board-appointed CSSO to Governor-appointed CSSO

Student Achievement vs. Governance Model

No Significant Dependence on Model



Elected Board,
board appoints
Superintendent

Appointed Board,
Board appoints
Superintendent

Appointed
Board, Elected
Superintendent

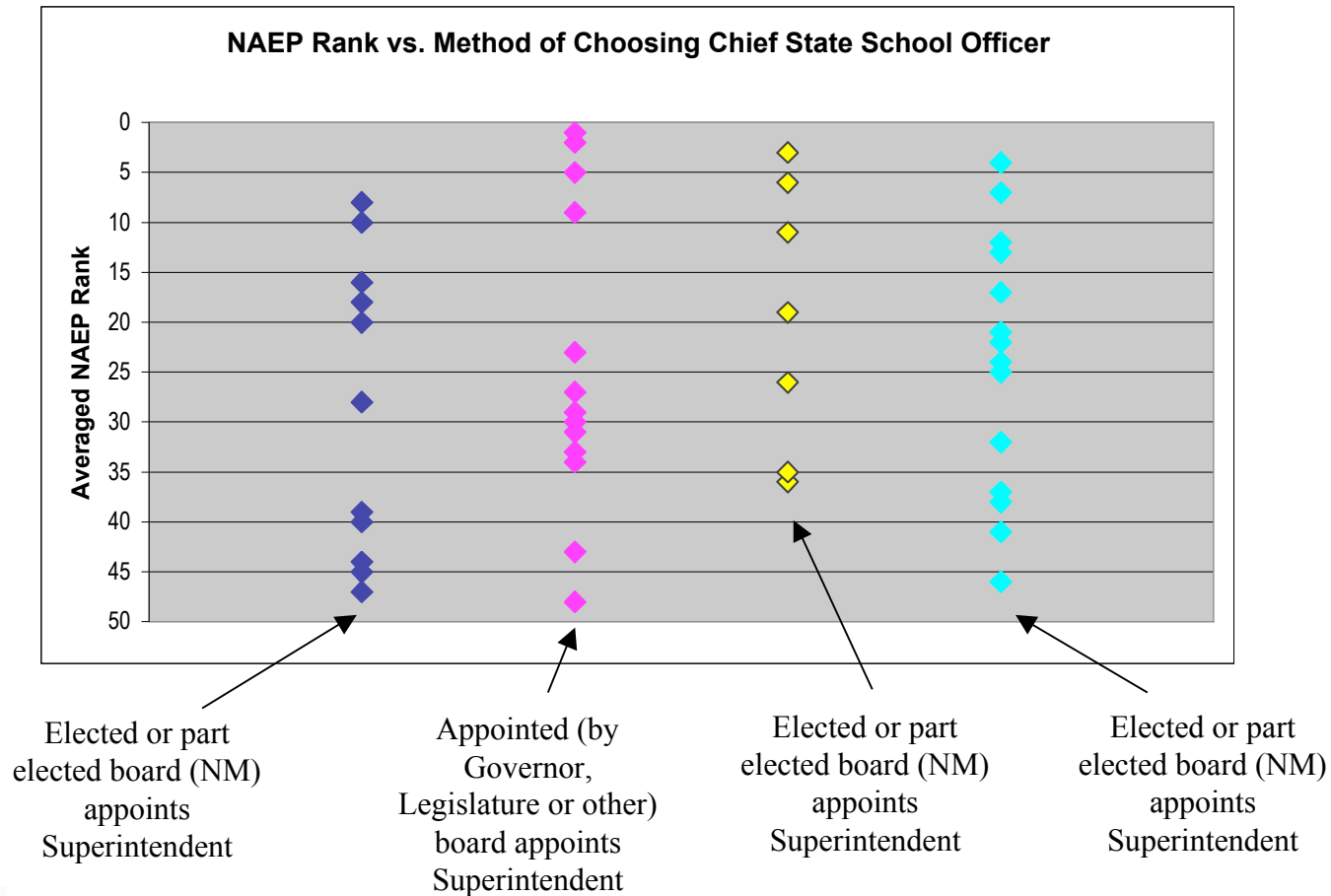
Appointed
Board.,
Appointed
Superintendent

Other systems,
including NM



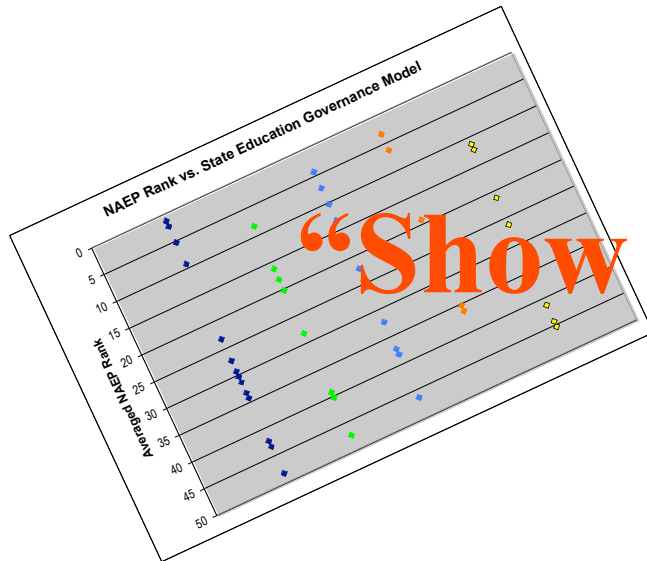
Student Achievement vs. Selection of Chief State School Officer

No Significant Dependence on Model



The Bottom Line

- Let data drive the discussion on Governance
- Focus on student achievement
- Don't make a major change without first understanding the unintended consequences



“Show me the Data!”

