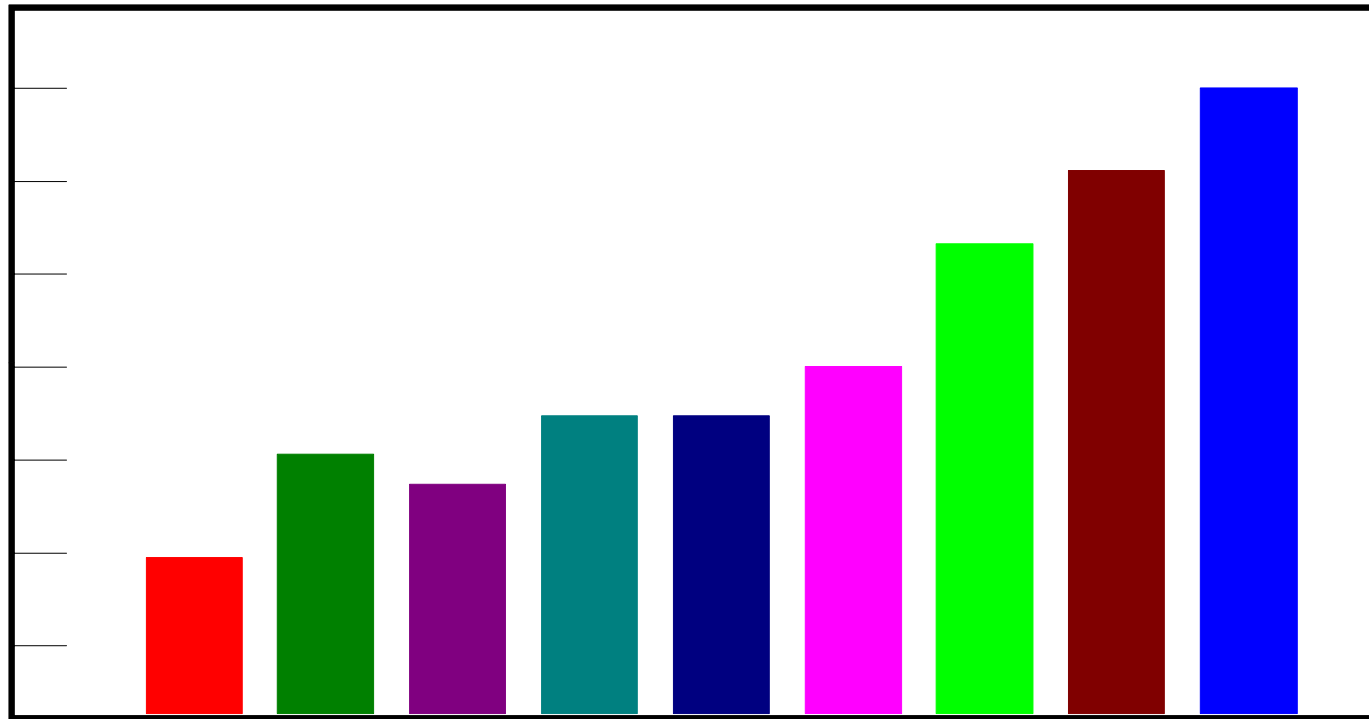
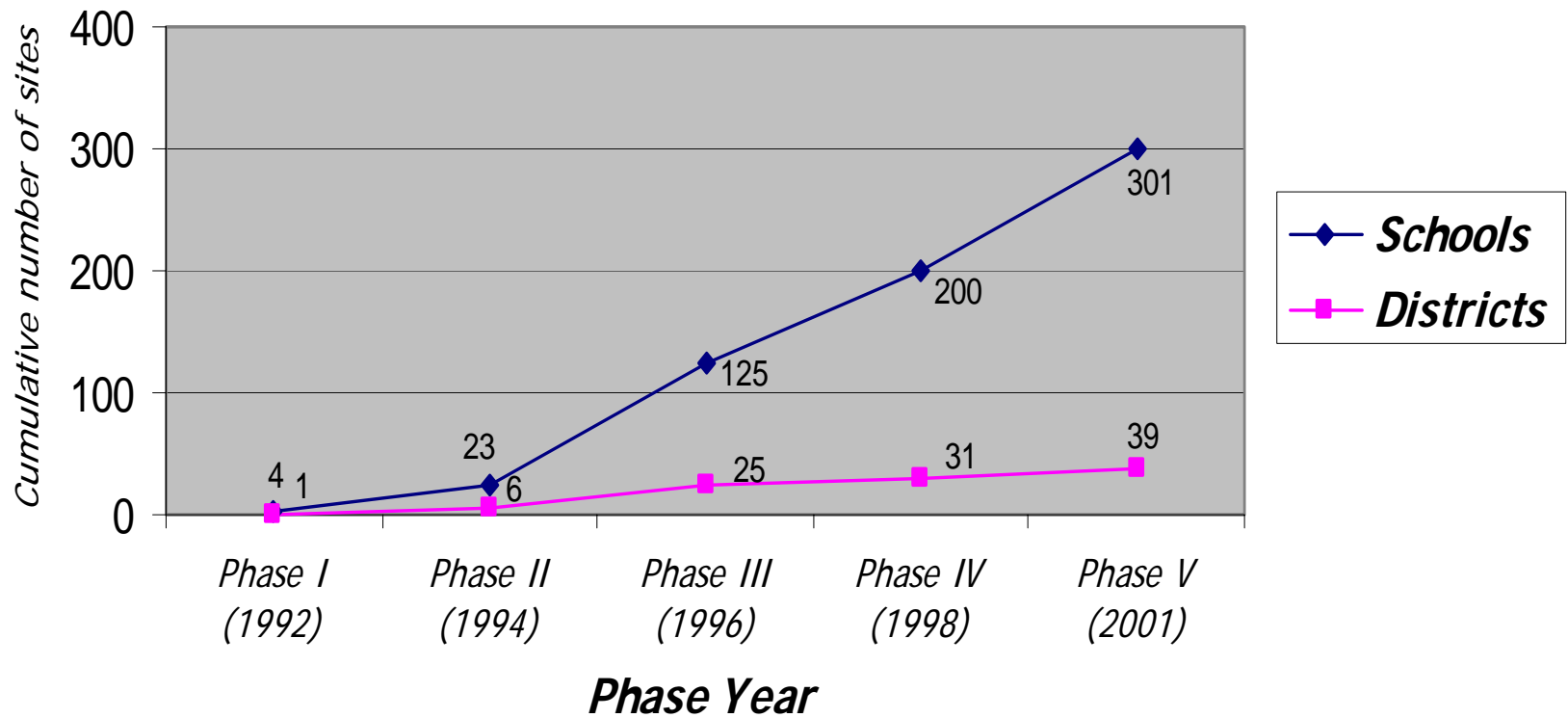


# *SQS Results 2001*



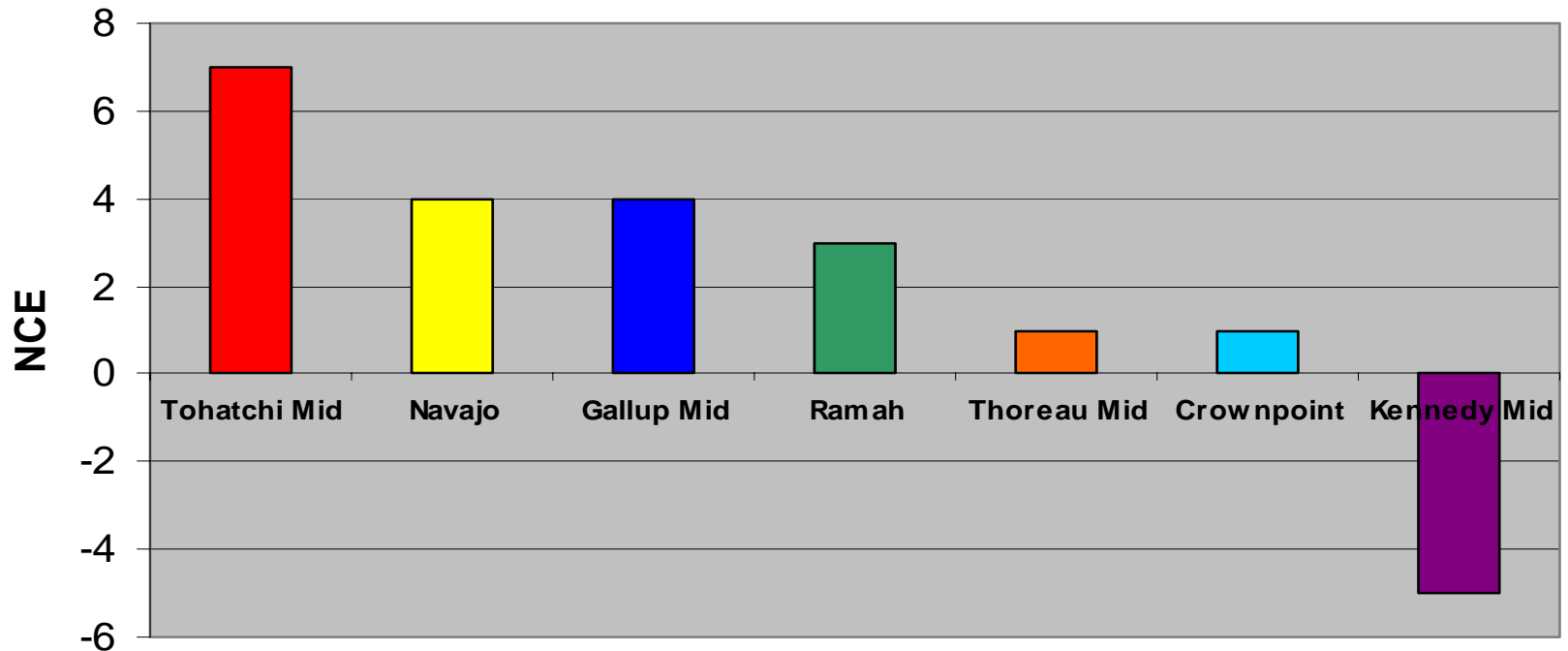
# Overall SQS Initiative Results

*SQS Participation*



# SQS School Results

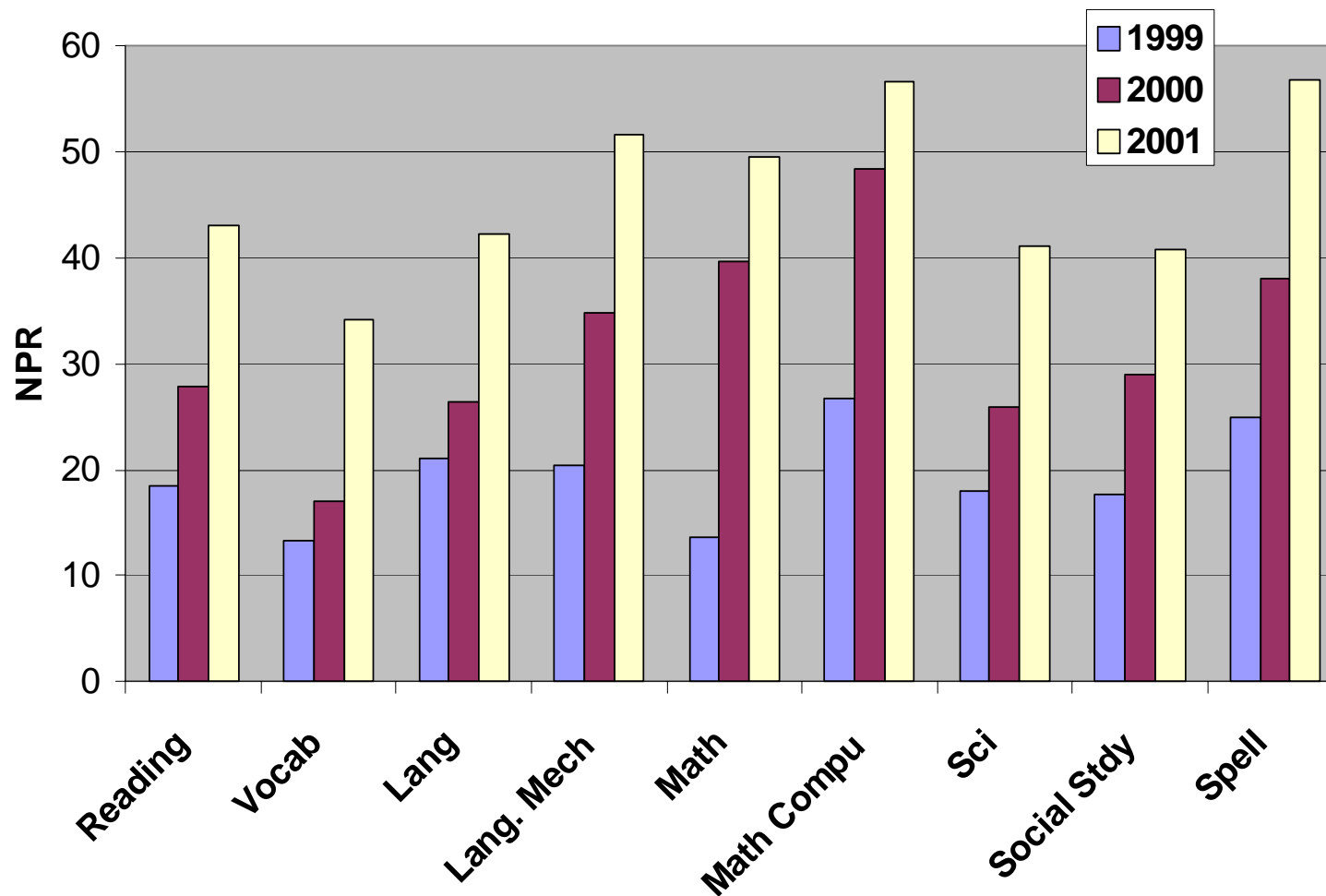
**6th Grade Mean NCE Gains by School  
(1997-2000)**



**Tohatchi Middle School used to score as one of the lowest schools in the district before applying SQS-taught concepts.**

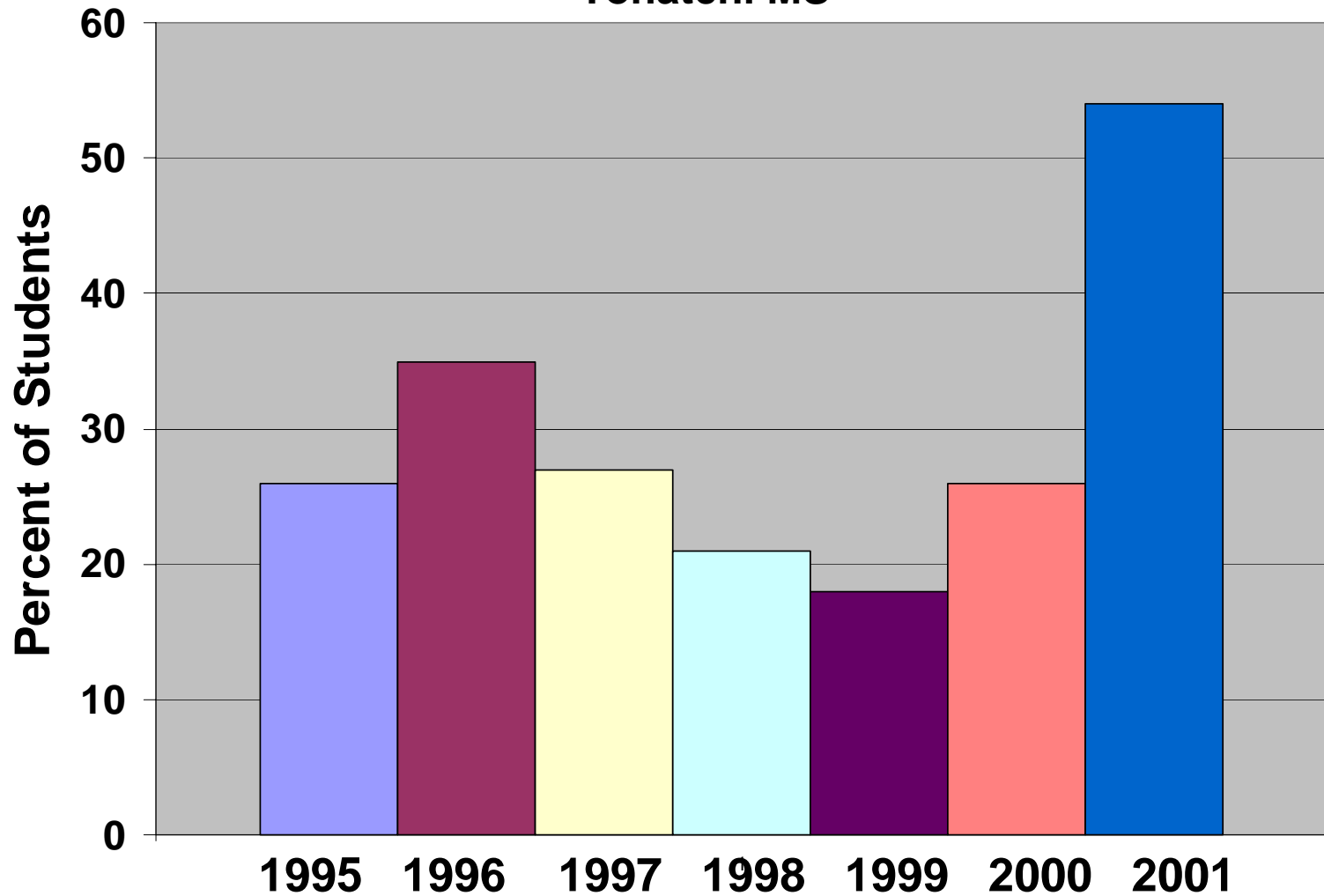
# SQS School Results

Sixth Grade CTB - Terra Nova  
Tohatchi MS



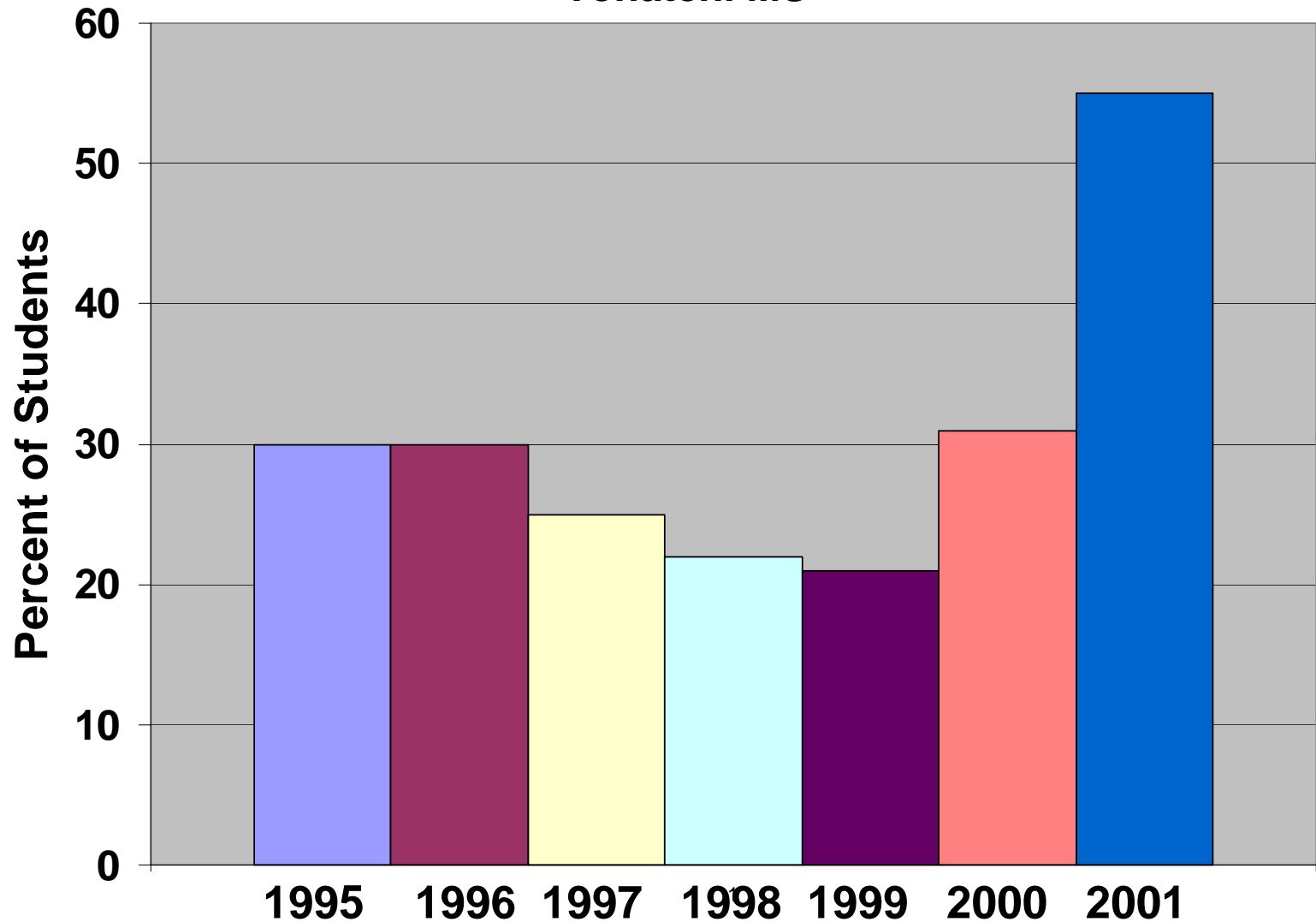
# SQS School Results

Reading Students scoring above the 40<sup>th</sup> percentile  
Tohatchi MS



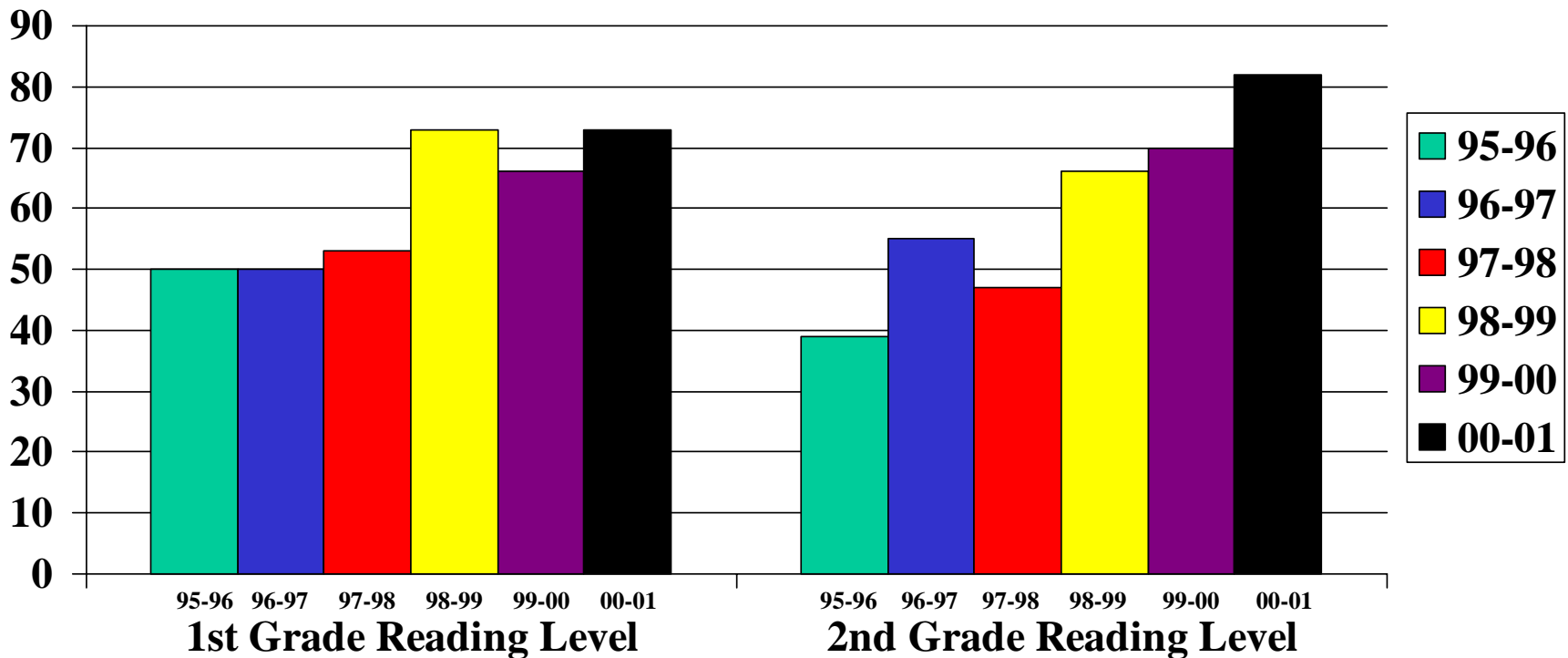
# SQS School Results

Math Students scoring above the 40<sup>th</sup> percentile  
Tohatchi MS



# SQS School Results

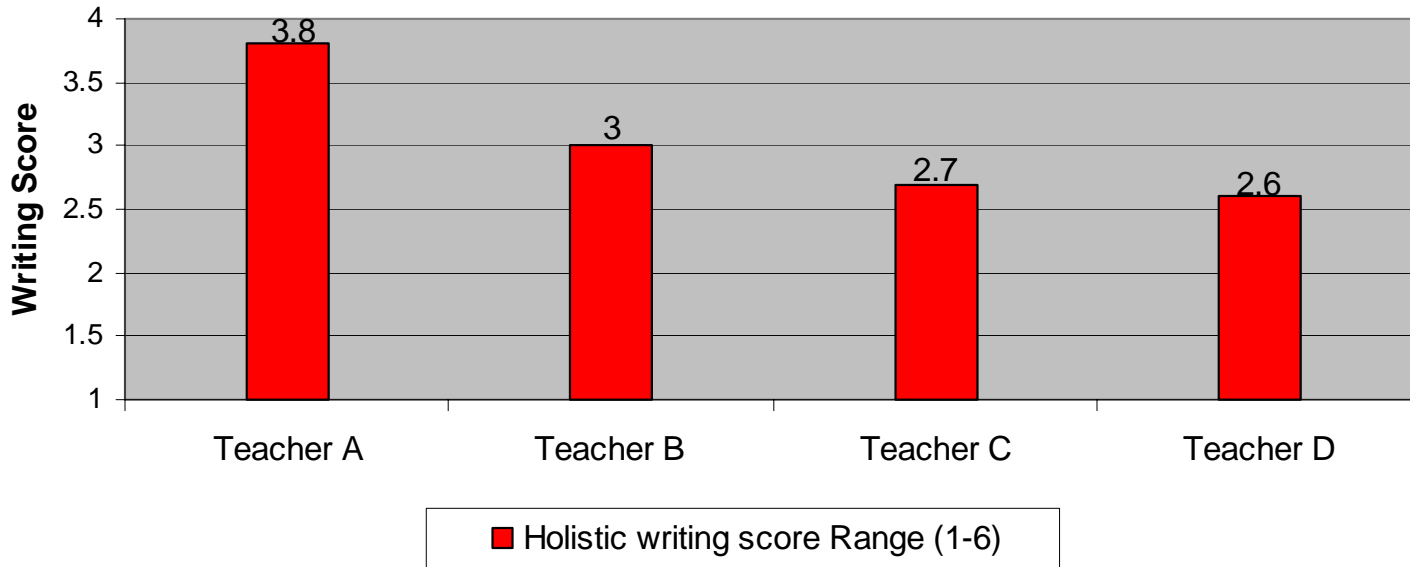
## Reading Assessment 1st and 2nd Grade Mesilla Park ES, Las Cruces



2000-2001- State Test decreased number of errors from 22 to 13 to be considered fluent

# SQS Classroom Results

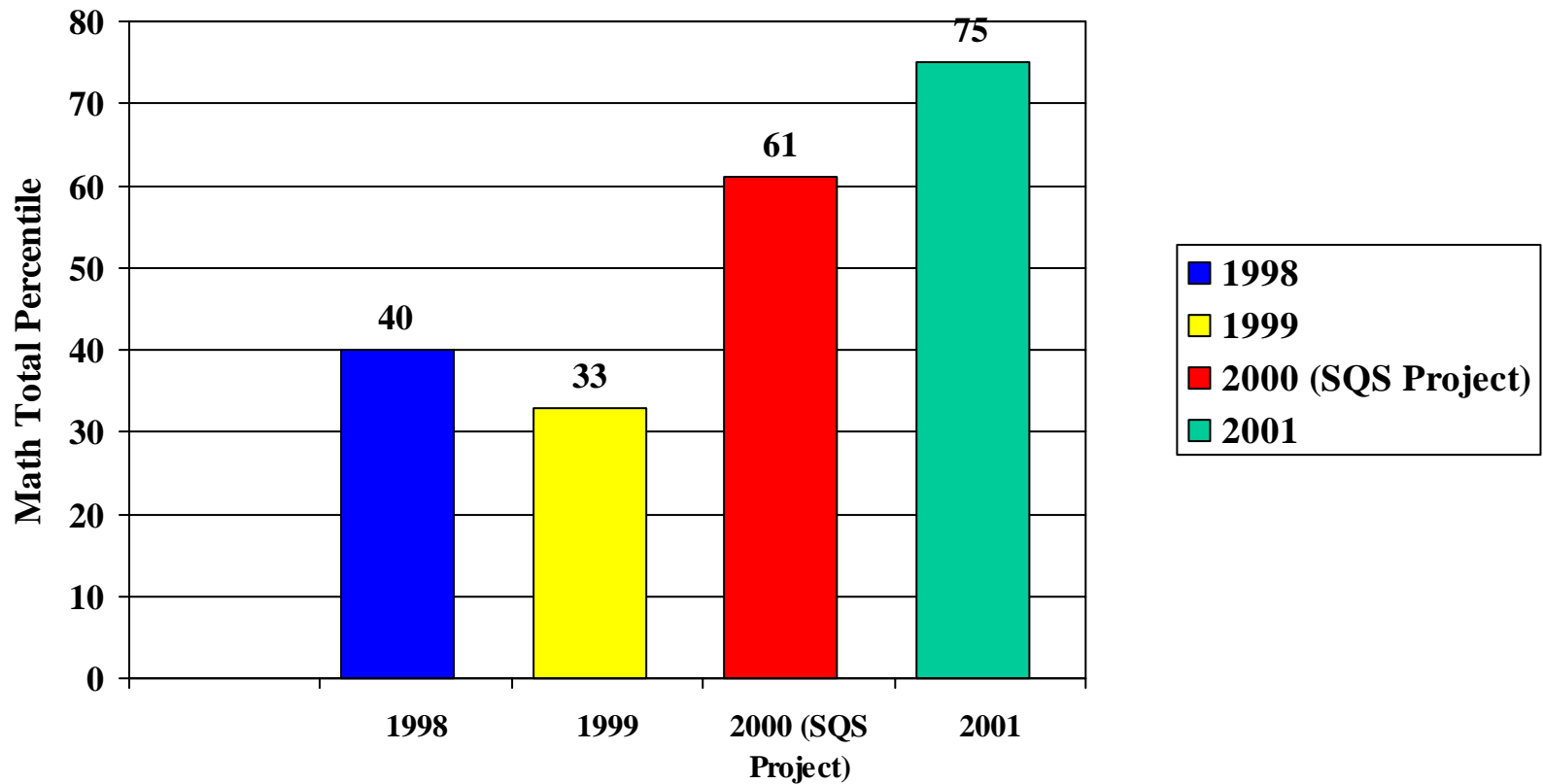
4th Grade Writing Assessment Comparison By Teacher at Mesilla Park ES,  
Las Cruces



*This figure illustrates MPES' 4th grade writing assessment results by teacher. A clear difference is shown on the Holistic Writing Score by those students taught by teacher A where SQS strategies were used. It should be noted that the 4th grade special education inclusion students were enrolled in teacher A's class*

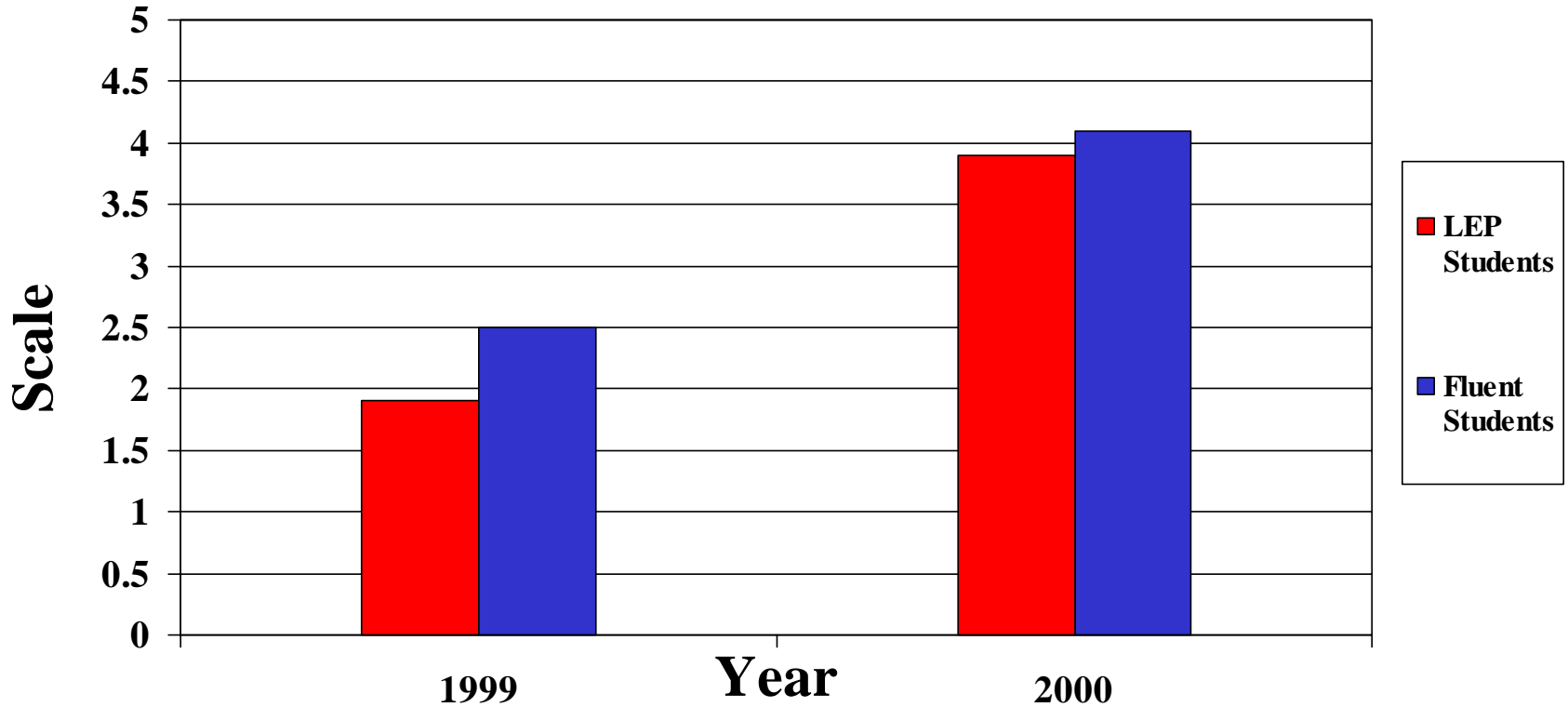
# SQS Classroom Results

## 4th Grade Math Total Scores on Terra Nova Test Adobe Acres, ES, Alb.



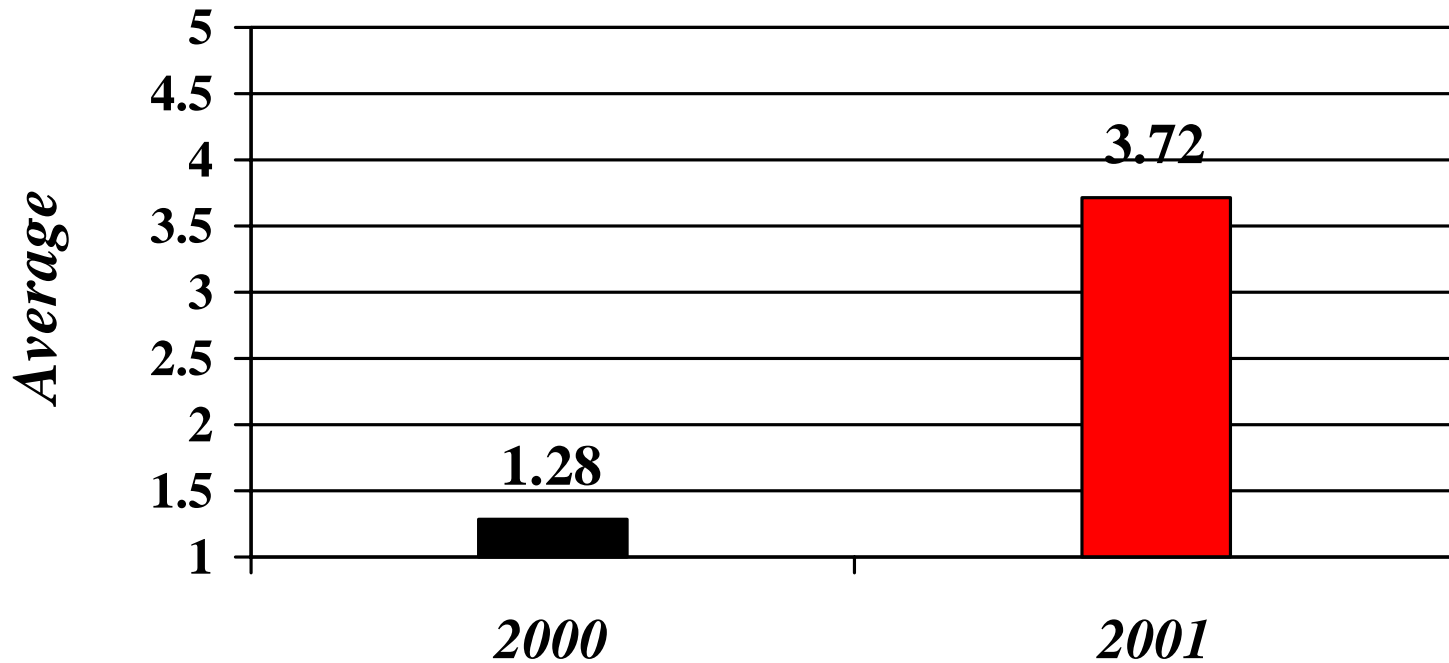
# SQS Classroom Results

*Increase in writing scores for  
LEP and Fluent Students (5.0 Scale)  
Navajo ES, Alb.*



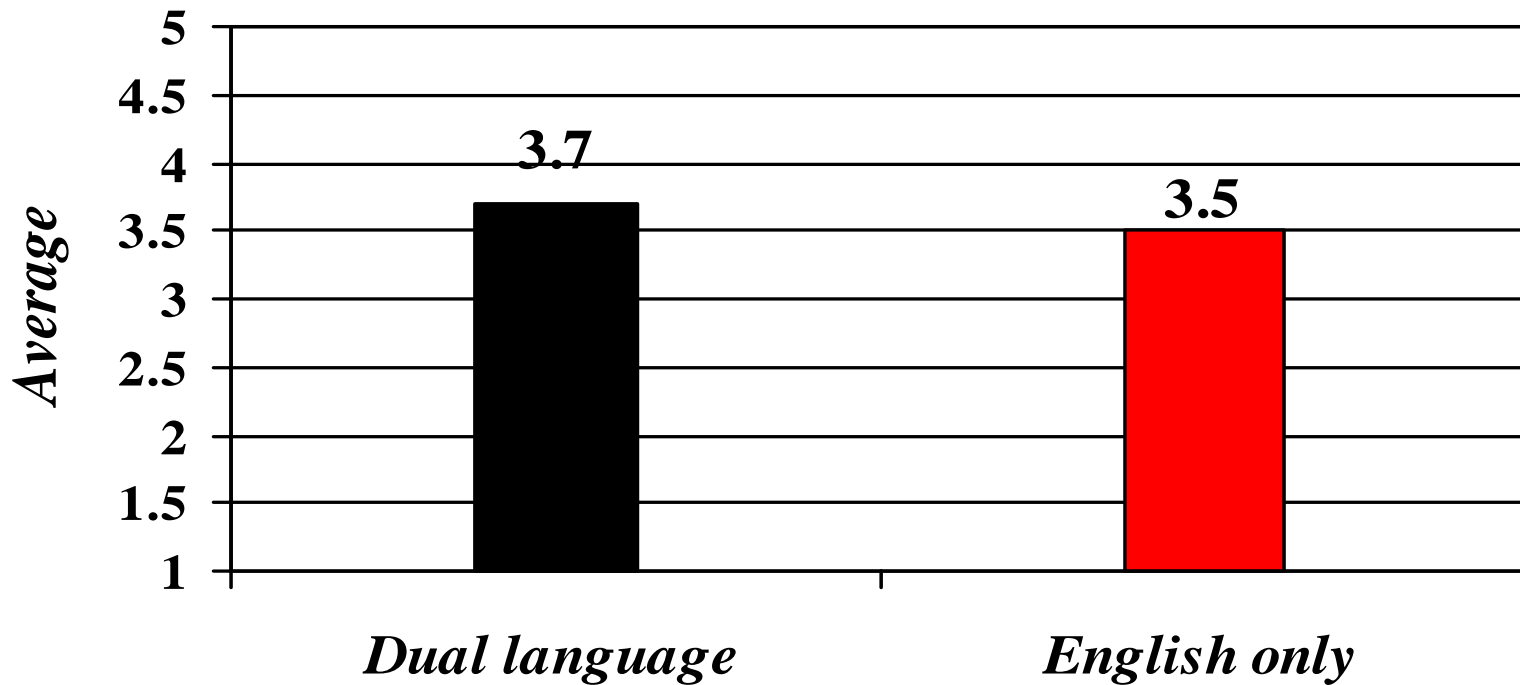
# SQS Classroom Results

*4th Grade Reading Level Dual Language Class  
Valle Vista ES- Alb., NM 2000-2001*



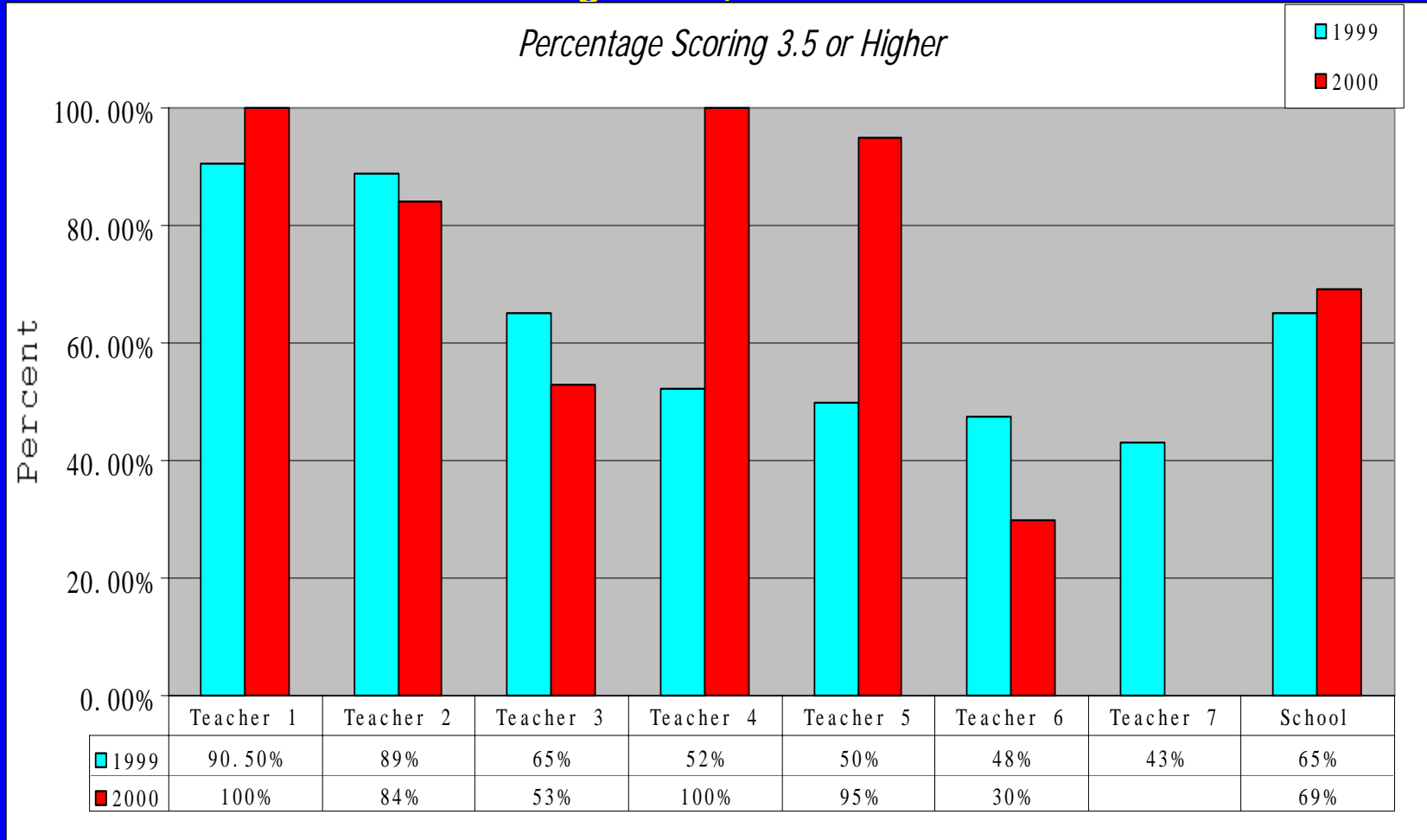
# SQS Classroom Results

*4th Grade NM Writing Assessment Dual  
Language Class 2001 Valle Vista ES- Alb., NM*



# SQS Classroom Results

## 4th Grade NM Writing Assessment Comparison By Teacher Marie Hughes ES, Alb. 1999-2000

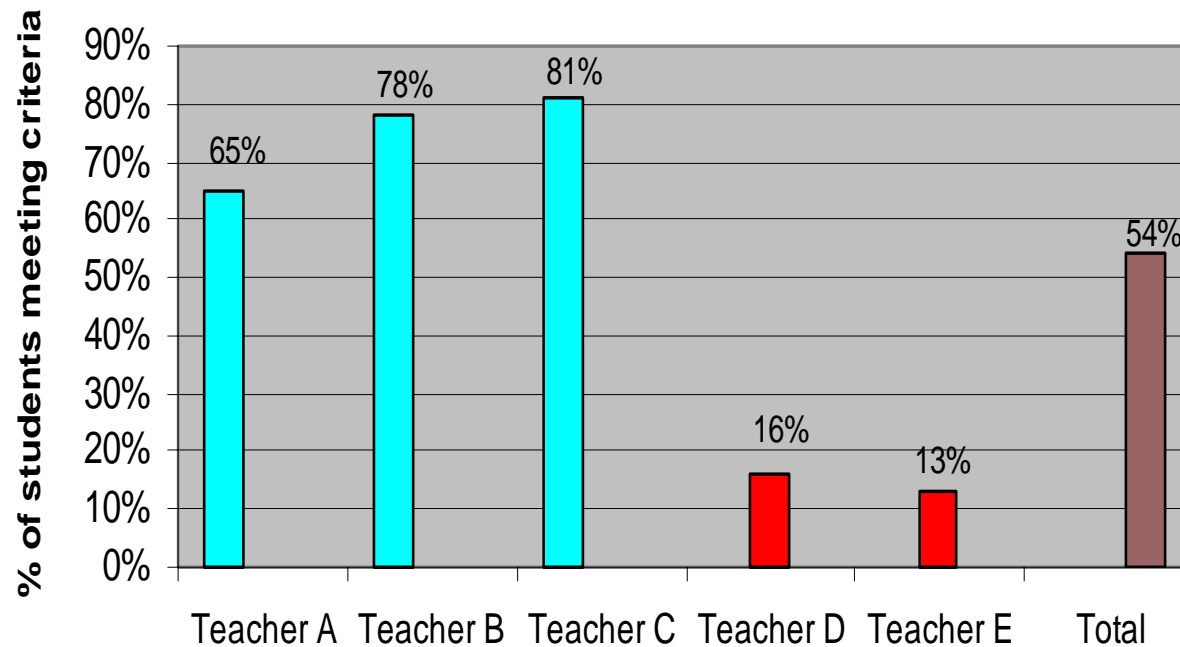


*Teachers 1 & 2 involved with SQS 1998-2000. Teachers 4 & 5 joined the following year. Teacher 7 changed grade levels 1999-2000.*

# SQS Classroom Results

Writing Assessment for 1st Grade Teachers using SQS Processes and Those Not  
Georgia O'Keeffe ES, Albuquerque

First Grade Super Sentence- December Results '99

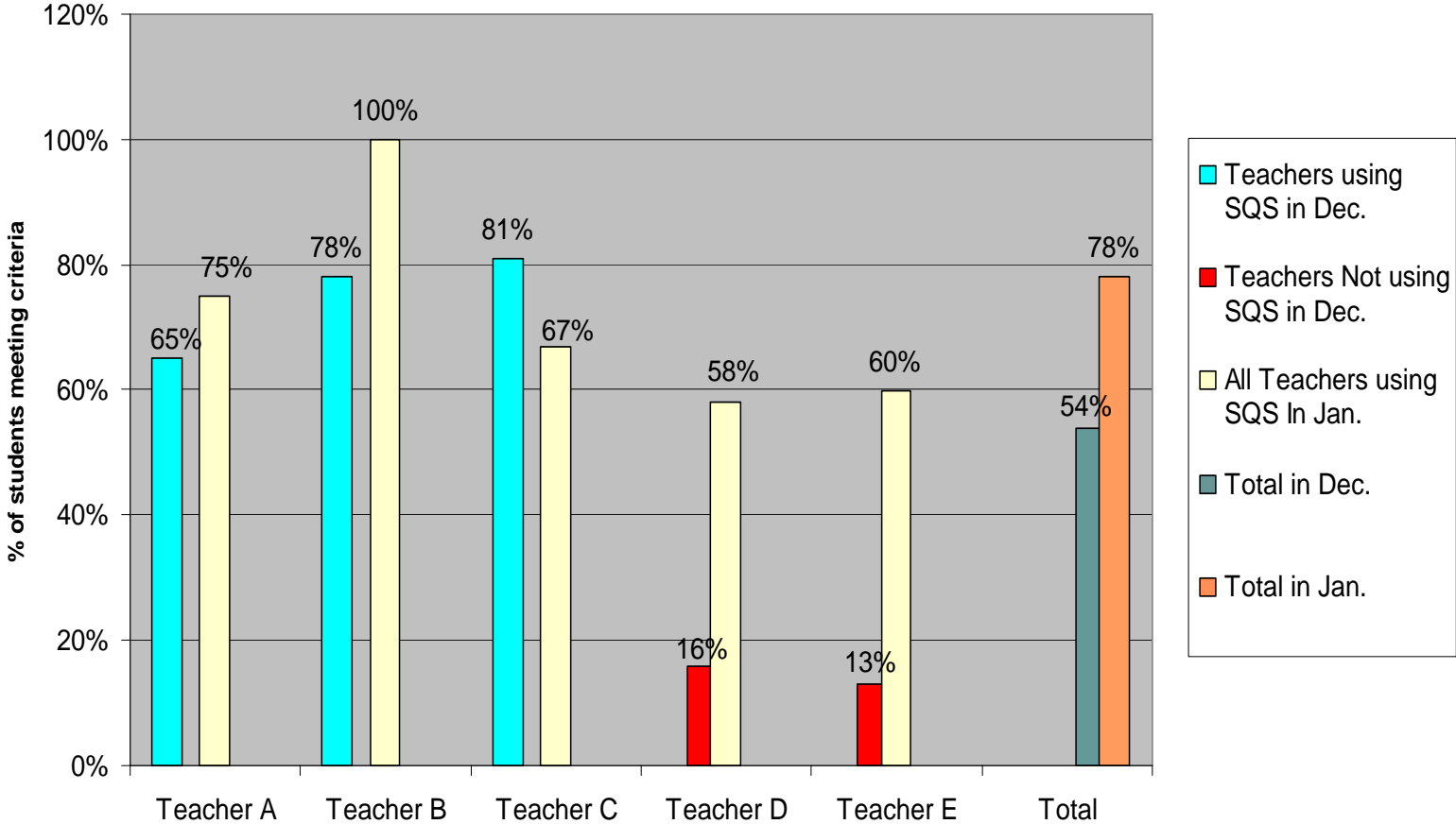


- Teachers Using SQS Processes
- Teachers Not Using SQS Processes
- Total

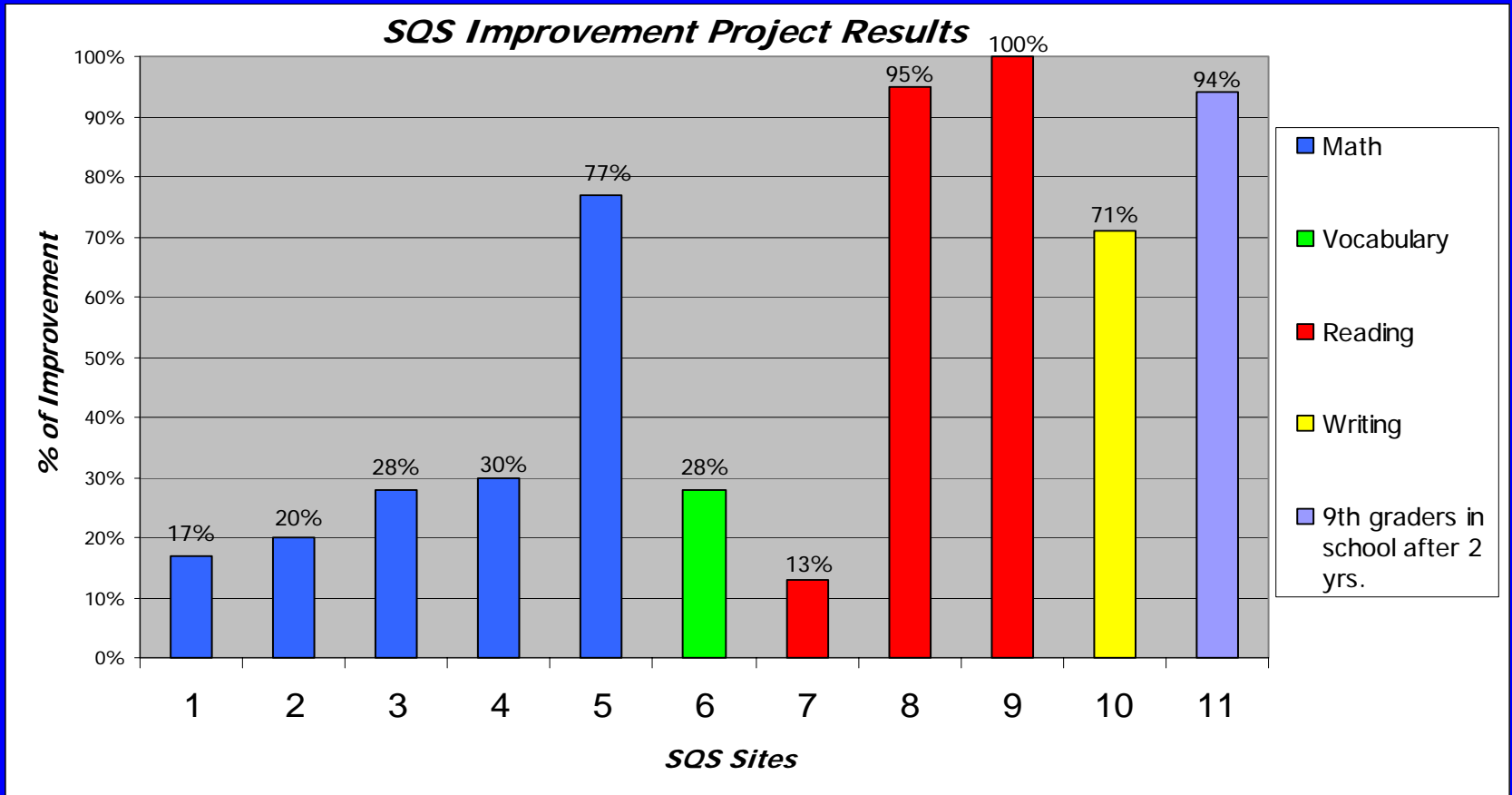
# SQS Classroom Results

*Writing Assessment for 1st Grade Teachers using SQS Processes  
Georgia O'Keeffe ES, Albuquerque*

**Super Sentence Results- One Month Later (Dec. 99- Jan. 2000)**



# SQS Overall Results

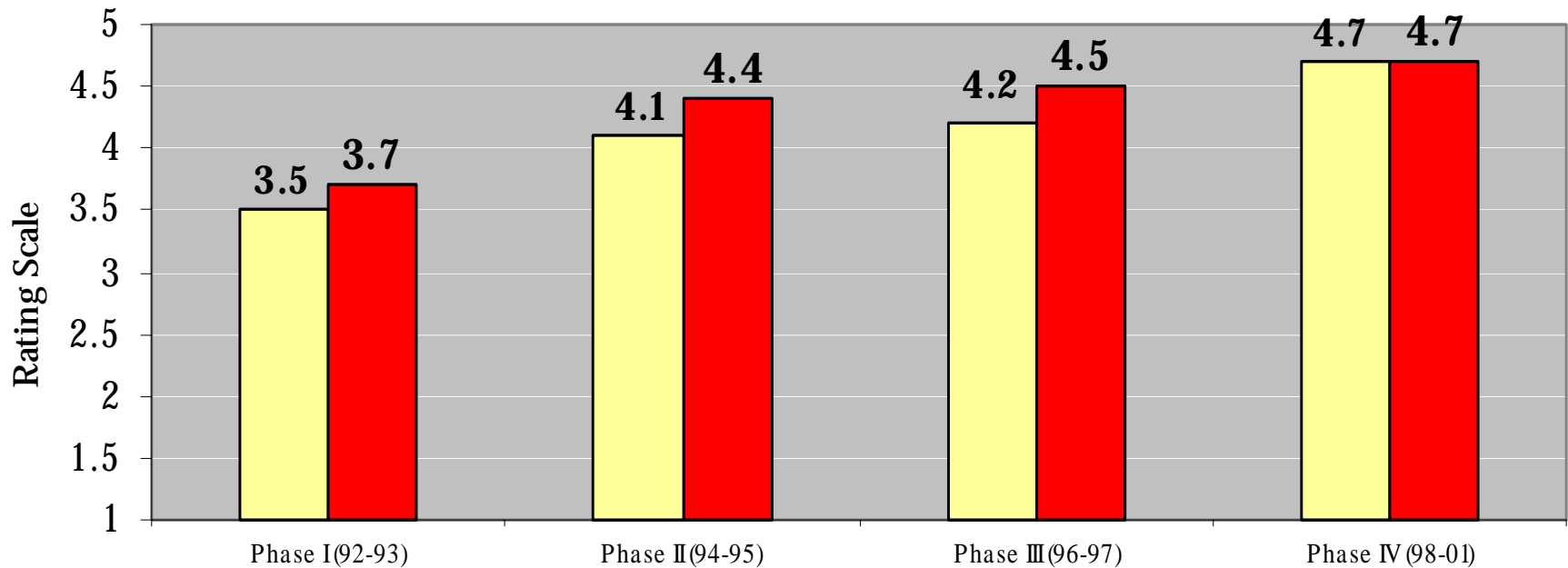


Eagle Ridge MS - 1  
 Kit Carson ES - 2  
 Adobe Acres - 3  
 St Therese Catholic - 4  
 Yucca ES - 5

Indian Hills ES - 6  
 Navajo ES - 7  
 Mt. View MS - 8  
 Duranes ES - 9  
 Marie Hughes ES - 10  
 Cibola HS - 11

# Overall SQS Initiative Results

## Overall Rating of SQS Training Session & Trainers



(1=Poor 3=Good 5=Excellent)

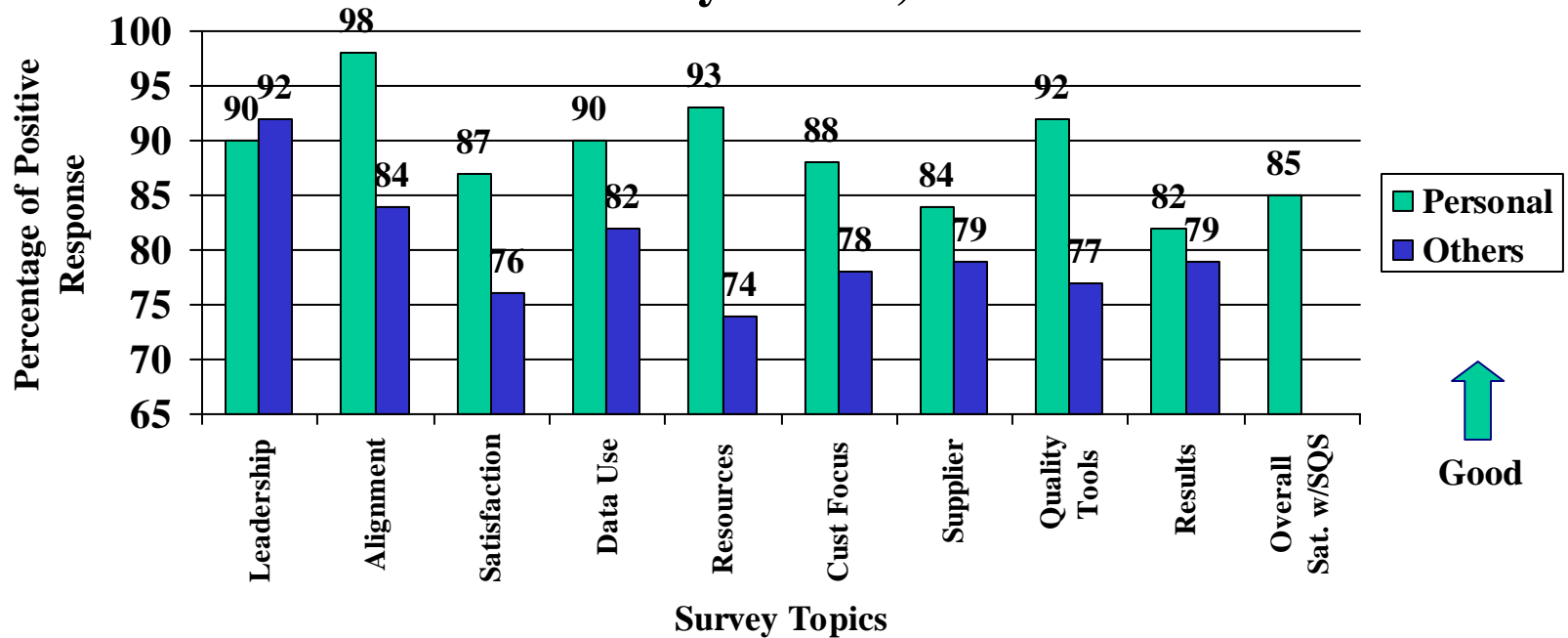
□ Trainings

■ Trainers

Good ↑

# Overall SQS Initiative Results

## SQS Phase IV Continuing Sites Use and Deployment Survey March, 2001



# Overall SQS Initiative Results

## SQS Phase IV New Sites Use and Deployment Survey March, 2001

